



SLATE LITE

the future of stone.

DATA SHEET: TRANSLUCENT

PRODUCT

Translucent consists of an approx. 1/64 - 1/18 inches thin stone layer and a carrier material made of a polyester reinforced with glass fibers to ensure the stability of the product.

MATERIAL COLOR AND COLOR DEVIATIONS

Natural stone is an absolutely timeless, natural product that has developed within millions of years. Deviations in coloration and pattern may therefore occur.

However, we strive to provide you with a product that is as uniform as possible, with a strong resemblance in coloration and texture.

For large areas, contact us to obtain a color scheme that is as homogeneous as possible. We also offer a photomatching service.

For available colors and decors, please refer to our current catalog, sample booklets or online store.

MAIN COMPONENTS

Stone layer approx. values in %		Back approx. values in %
Oxygen (O)	44,6	73,0
Carbon (C)	31,0	26,0
Silicon (Si)	13,0	
Aluminum (Al)	5,6	
Iron (Fe)	3,4	
Potassium (K)	2,4	

FORMALDEHYDE

Translucent is formaldehyde-free.

STANDARD SIZES

Standard format: 48 x 24 inches

Large formats: 94 1/2 x 47 1/4 inches

110 1/4 x 47 1/4 inches

All three sizes are available in most decors and mostly in stock. For exact availabilities please contact our sales department.

*) Please note that size deviations of $\pm 1/16$ inches in width, length or diagonal are possible due to production.

WEIGHT

approx. 0.35 - 0.62 lbs/ft²

TOTAL THICKNESS

approx. 1/16 inch to 5/64 inch

DENSITY

0.297 lbs/ft²

EXTENSION

1/50 - 1/32 inches

(at a temperature variation of 194°F on the linear meter)



SLATE LITE

the future of stone.

DATA SHEET: TRANSLUCENT

TEMPERATURE RESISTANCE

up to 248°F

BENDABLE RADIUS

approx. 4 inches

TEST ACCORDING TO ASTM / C-121

Water absorption of the unsealed material + 2.5%.

SLIP CLASS

Slate-Lite has achieved slip classes R9 (for variegated slate), R10 (for mica slate), and R11 (with Silver Grey).

CE MARKING

Slate-Lite has been approved according to CE standard:

DIN EN 15102:2011-12

DIN EN 15102:2008+A1:2011

PROCESSING TEMPERATURE

Recommended processing temperature: 50°F to 95°F.

FIELDS OF APPLICATION

Counters, lamps, furniture construction, ceilings, backlit objects.

SUBSTRATES

For better stability on larger surfaces, we recommend bonding to (frosted) glass, acrylic glass or similar substrates. Please observe the instructions and data sheets of the adhesives or plastics used for substrate processing.

PROCESSING TOOLS

Commercial tools: sawing with wood saw blade and drilling with metal or wood drill.

For industrial processing, we recommend a carbide or diamond saw blade with a minimum tooting of 72 teeth.

If painter's masking tape is to be used, care must be taken not to leave adhesive traces. Do not use tape on surfaces that have already been sealed, as well as tape that is too adhesive, and do not allow the tape to remain on the material for too long.

Please test any adjustments to the material and tools used on an inconspicuous area or sample beforehand. Only process sheets that have been able to lie flat and are completely relaxed!

STORAGE

The material should be stored horizontally and flat to avoid deformation.

The material should be stored in a dry, frost-free place protected from sunlight. Severe temperature fluctuations should be avoided as this could deform the material.

CLEANING

All natural stone surfaces must be wiped regularly with a damp cloth despite impregnation or sealing. Use a lint-free cloth for this purpose.

Important note: Acid cleaners can damage the surface of the stone!

SURFACE PROTECTION

For detailed information on our impregnations and sealers, please refer to the respective product data sheets and instructions.



SLATE LITE

the future of stone.

DATA SHEET: TRANSLUCENT

LIGHT SOURCES & LIGHT INTENSITIES

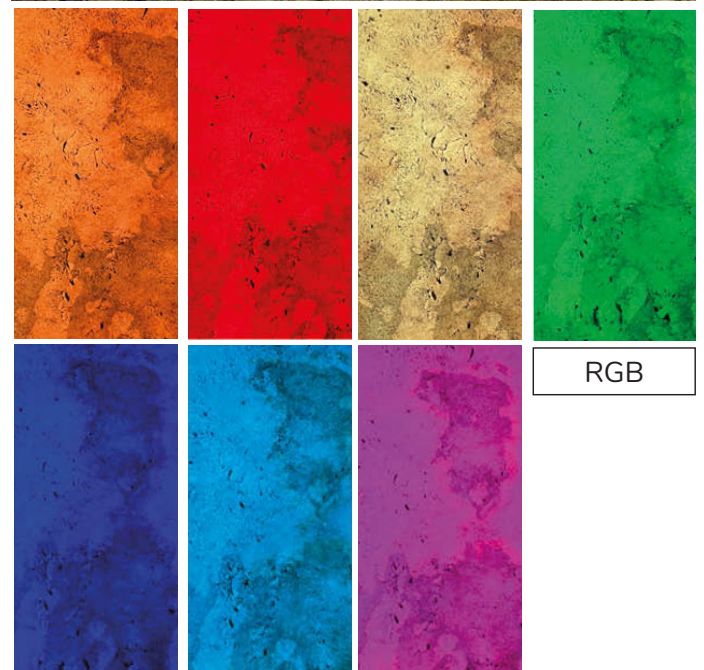
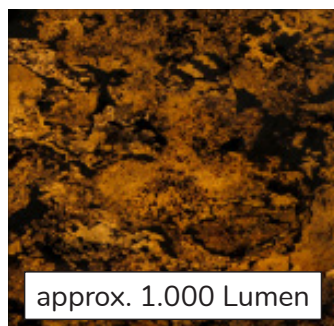
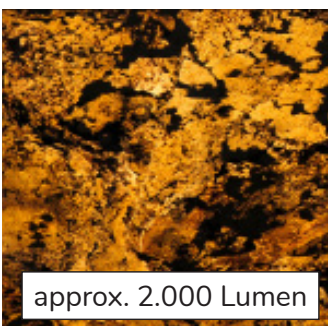
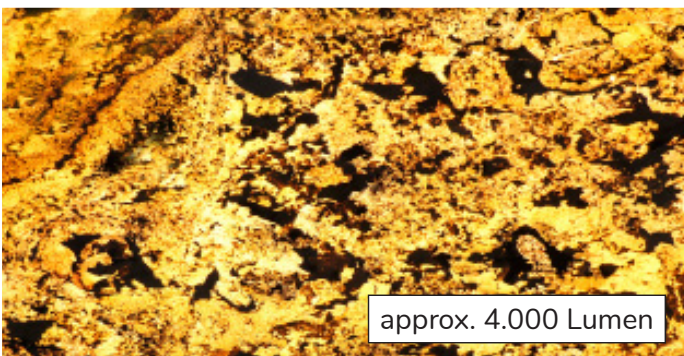
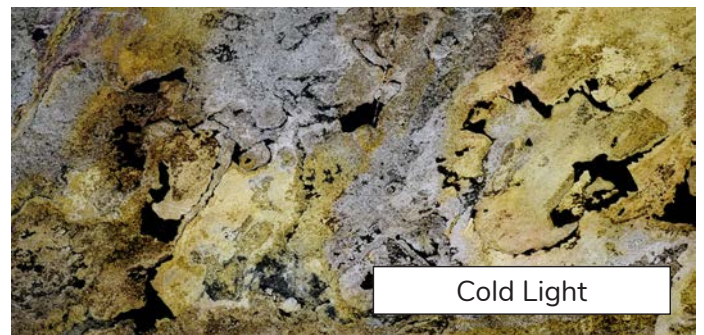
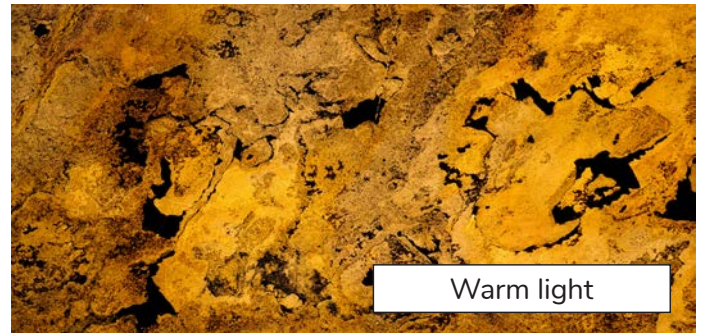
In principle, any light source behind the stone leaf is possible.

The simplest method for uniform illumination is an LED panel with high light output. However, you can also use fluorescent tubes, incandescent bulbs or LED strips, in this case a frosted glass pane between the light source and the Translucent decor helps to distribute the light better. A sufficient distance between the light source and the Translucent also ensures optimal light diffusion here.

Depending on whether you use warm, cold or colorful RGB light, you can create different lighting moods.

The light output depends on the selected light source and its luminous intensity as well as the selected decor.

As an example, here is the decor FALLING LEAVES with different types of light. On YouTube and in the online store you will find corresponding example images and videos for all available decors.





SLATE LITE

the future of stone.

DATA SHEET: TRANSLUCENT

SHIPPING / UNBOXING

Our standard 48 x 24 inches format is sent to you stacked in a flat shipping box. Depending on the decor, up to 15 sheets fit in one package.

Large formats with 94 1/2 x 47 1/4 inches and 110 1/4 x 47 1/4 inches are shipped on a pallet or rolled. For this purpose, we heat the sheet over the entire surface and carefully roll it up. Up to 2 large formats fit in one carton.

Please always open all packaging carefully and make sure that you do not leave any scratches on the material. Check directly upon receipt of goods whether the corners of the pallet or carton are damaged and have this acknowledged by the carrier.

Rolled large formats must best be heated over a large area and should be laid out completely flat before processing! Do not unroll the material too quickly or when cold, as this may cause damage. No cracking noises should be heard during unrolling! The optimum temperature for unrolling is between 86°F to 158°F.

Please note that small stone chips do not represent any damage to the material, but are rather a quality feature for the real natural stone surface: Despite small stone chips in the package, the Slate-Lite sheet is usually completely undamaged and the stone surface is intact over its entire surface!

Furthermore, slight superficial scratches on the material may occur, this is unfortunately unavoidable due to storage and transport. Such light scratches can be easily wiped away with a lint-free cloth and are also no damage to the material!

A detailed FAQ video on shipping and unpacking the goods is available on our homepage and on YouTube.

All common modes of transportation are suitable: sea and air freight as well as courier shipments.

Since Slate-Lite is very light, it can be shipped worldwide without any problems. For urgent shipments, it is even recommended to send by courier.

If you have any questions about shipping, please contact our sales department for the latest condition sheets.

QUALITY ASSURANCE

To ensure the quality, a German quality inspection takes place. Starting from the purchase of the raw material to the shipment of the material, each sheet is subjected to a strict quality inspection. Each sheet is inspected by several inspectors until it is shipped and will not be shipped if there is the slightest defect.

LIFE CYCLE ASSESSMENT

With Slate-Lite you are choosing an environmentally friendly stone decoration! The emission rates on the transport routes are many times lower with Slate-Lite than with conventional stone slabs, which leads to a significantly more positive eco-balance.

The majority of our goods are shipped by sea to our central warehouse. With a pollutant quantity of approx. 0.5322 oz of CO₂ emission per kilometer (source: NABU) the following example calculation of one of our containers results:

(Comparative calculation: sea route India/Germany. granite slab vs. Slate-Lite)

	Transportweg	Material (m ²)	Ladung (kg)
Slate-Lite	Seecontainer 40	114 1/2 ft ²	58,422 lbs
Granitsteinplatte (3/4 inches)	Seecontainer 40'	4,746 ft ²	58,422 lbs
	Distance (km)	CO ₂ emission (oz)	CO ₂ emission / ft ²
Slate-Lite	4,660 miles	105 oz (or 6 5/8 lbs)	9.95 oz
Granitsteinplatte (3/4 inches)	4,660 miles	105 oz (or 6 5/8 lbs)	240 oz (or 15 lbs)



SLATE LITE

the future of stone.

DATA SHEET: TRANSLUCENT

So one sheet of Slate-Lite produces about 95% less CO₂ than a conventional thick stone slab during transport.

Furthermore, the manufacturing process we have developed also conserves natural resources in the quarries: From the stone material of a single conventional stone slab of 2 cm, we obtain 200 - 300 slabs of Slate-Lite, depending on the decor.

Of course, we are also relying more and more on recyclable solutions for our packaging, so that we have already been able to reduce the proportion of plastic waste many times over in recent years. And we will of course continue to work on this path in the future!

SPECIAL FEATURES & FURTHER INFORMATION

Do you need more detailed information about a specific decor?
A daily updated list of all available maximum and special sizes as well as detailed lists of application areas per decor and detailed information on adhesive and protective products are available from our sales department upon request.

1-888-817-9217



1-407-924-13-96



usa@slate-lite.com



vCard

INFORMATION: MATERIAL TESTING AFTER RECEIPT

Slate-Lite is made from layered stone. Color differences in the individual slabs as well as quartz veins running through the stone, natural cracks or slight chipping may occur.

This is not a reason for complaint, but is a characteristic of the natural stone surface! Should you nevertheless discover a defect or excessive changes in color or structure in the goods sent, please inform us immediately within 14 days.

Goods that are processed despite obvious defects are excluded from recourse claims!